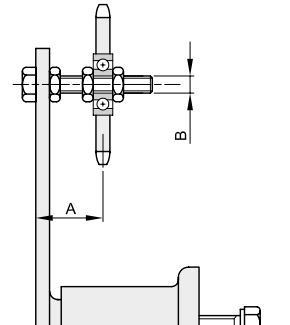


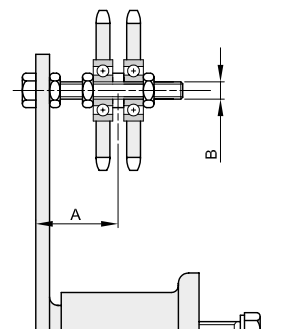
EINFACH

Beschreibung	Ketten	Artikelnr.	ISO	Zähne- zahl	A	B	kg
TEKS 3	3/8" x 7/32"	6020110330	06B1	15	20 ÷ 50	M10	0,60
TEKS 3	1/2" x 5/16"	6020110340	08B1	15	20 ÷ 50	M10	0,65
TEKS 5	5/8" x 3/8"	6020110350	10B1	15	26 ÷ 67	M12	2,32
TEKS 5	3/4" x 7/16"	6020110360	12B1	15	26 ÷ 67	M12	2,55
TEKS 6	1" x 17,02	6020110380	16B1	13	37 ÷ 102	M20	5,00
TEKS 7	1 1/4" x 3/4"	6020110400	20B1	13	39 ÷ 122	M20	8,55
TEKS 7	1 1/2" x 1"	6020110420	24B1	11	39 ÷ 142	M20	8,90



ZWEIFACH

Beschreibung	Ketten	Artikelnr.	ISO	Zähne- zahl	A	B	kg
TEKS 3	3/8" x 7/32"	6020120330	06B2	15	25 ÷ 44	M10	0,65
TEKS 4	1/2" x 5/16"	6020120340	08B2	15	27 ÷ 43	M10	1,15
TEKS 5	5/8" x 3/8"	6020120350	10B2	15	34 ÷ 59	M12	2,55
TEKS 5	3/4" x 7/16"	6020120360	12B2	15	36 ÷ 57	M12	3,00
TEKS 6	1" x 17,02	6020120380	16B2	13	52 ÷ 86	M20	5,80
TEKS 7	1 1/4" x 3/4"	6020120400	20B2	13	57 ÷ 104	M20	10,10
TEKS 7	1 1/2" x 1"	6020120420	24B2	11	63 ÷ 118	M20	10,75



DREIFACH

Beschreibung	Ketten	Artikelnr.	ISO	Zähne- zahl	A	B	kg
TEKS 4	3/8" x 7/32"	6020130330	06B3	15	31 ÷ 39	M10	0,95
TEKS 5	1/2" x 5/16"	6020130340	08B3	15	40 ÷ 53	M12	2,45
TEKS 6	5/8" x 3/8"	6020130350	10B3	15	53 ÷ 85	M20	4,95
TEKS 6	3/4" x 7/16"	6020130360	12B3	15	56 ÷ 83	M20	5,20
TEKS 7	1" x 17,02	6020130380	16B3	13	70 ÷ 70	M20	9,40
TEKS 7	1 1/4" x 3/4"	6020130400	20B3	13	75 ÷ 86	M20	11,70
TEKS 7	1 1/2" x 1"	6020130420	24B3	11	87 ÷ 94	M20	12,70

