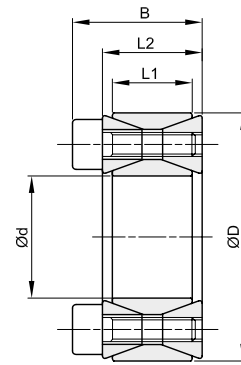
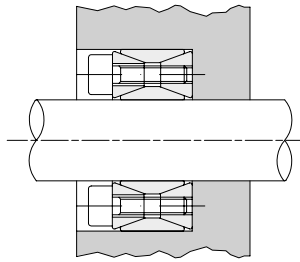


Nicht selbstzentrierend

Für sehr hohe Drehmomente geeignet
 Toleranzen: Welle h11 – Nabe H11
 Oberflächenrauigkeit: R_t max 16 μ m
 Kurze Einbauzeit

Um eine gute Rundlaufgenauigkeit zu erreichen, ist es notwendig Welle und Nabe genau auszurichten.



| d x D mm | Artikelnr. | L1 mm | L2 mm | B mm | Übertragbares | | Flächenpressung zw. Spannsatz und | | Spannschrauben | | | kg |
|-------------|-------------|----------|----------|---------|------------------------|---------------------------|--------------------------------------|---------------------------------|------------------------|--------|-------------------------------|-------|
| | | | | | Drehmoment Mt Nm | Axialkraft F ax. KN | Welle pw N/mm ² | Nabe pn N/mm ² | DIN 912 12,9 Nr. | Typ | Anzugs- moment Ms Nm | |
| 19 x 47 | BK040019047 | 17 | 20 | 26 | 298 | 31 | 286 | 116 | 8 | M6x18 | 14,9 | 0,25 |
| 20 x 47 | BK040020047 | 17 | 20 | 26 | 313 | 31 | 272 | 116 | 8 | M6x18 | 14,9 | 0,24 |
| 22 x 47 | BK040022047 | 17 | 20 | 26 | 345 | 31 | 247 | 116 | 8 | M6x18 | 14,9 | 0,23 |
| 24 x 50 | BK040024050 | 17 | 20 | 26 | 424 | 35 | 255 | 123 | 9 | M6x18 | 14,9 | 0,26 |
| 25 x 50 | BK040025050 | 17 | 20 | 26 | 441 | 35 | 245 | 123 | 9 | M6x18 | 14,9 | 0,25 |
| 28 x 55 | BK040028055 | 17 | 20 | 26 | 549 | 39 | 243 | 124 | 10 | M6x18 | 14,9 | 0,30 |
| 30 x 55 | BK040030055 | 17 | 20 | 26 | 588 | 39 | 227 | 124 | 10 | M6x18 | 14,9 | 0,29 |
| 32 x 60 | BK040032060 | 17 | 20 | 26 | 752 | 47 | 255 | 136 | 12 | M6x18 | 14,9 | 0,30 |
| 35 x 60 | BK040035060 | 17 | 20 | 26 | 822 | 47 | 233 | 136 | 12 | M6x18 | 14,9 | 0,32 |
| 38 x 65 | BK040038065 | 17 | 20 | 26 | 1042 | 55 | 250 | 146 | 14 | M6x18 | 14,9 | 0,36 |
| 40 x 65 | BK040040065 | 17 | 20 | 26 | 1097 | 55 | 238 | 146 | 14 | M6x18 | 14,9 | 0,34 |
| 42 x 75 | BK040042075 | 20 | 24 | 32 | 1740 | 83 | 291 | 163 | 12 | M8x22 | 35 | 0,48 |
| 45 x 75 | BK040045075 | 20 | 24 | 32 | 1864 | 83 | 271 | 163 | 12 | M8x22 | 35 | 0,57 |
| 48 x 80 | BK040048080 | 20 | 24 | 32 | 1988 | 83 | 254 | 153 | 12 | M8x22 | 35 | 0,59 |
| 50 x 80 | BK040050080 | 20 | 24 | 32 | 2071 | 83 | 244 | 153 | 12 | M8x22 | 35 | 0,60 |
| 55 x 85 | BK040055085 | 20 | 24 | 32 | 2658 | 97 | 259 | 168 | 14 | M8x22 | 35 | 0,63 |
| 60 x 90 | BK040060090 | 20 | 24 | 32 | 2900 | 97 | 238 | 158 | 14 | M8x22 | 35 | 0,69 |
| 65 x 95 | BK040065095 | 20 | 24 | 32 | 3587 | 110 | 250 | 171 | 16 | M8x22 | 35 | 0,73 |
| 70 x 110 | BK040070110 | 24 | 28 | 38 | 5345 | 153 | 268 | 171 | 14 | M10x25 | 69 | 1,26 |
| 75 x 115 | BK040075115 | 24 | 28 | 38 | 5727 | 153 | 250 | 163 | 14 | M10x25 | 69 | 1,33 |
| 80 x 120 | BK040080120 | 24 | 28 | 38 | 6108 | 153 | 235 | 156 | 14 | M10x25 | 69 | 1,40 |
| 85 x 125 | BK040085125 | 24 | 28 | 38 | 7417 | 175 | 252 | 172 | 16 | M10x25 | 69 | 1,49 |
| 90 x 130 | BK040090130 | 24 | 28 | 38 | 7854 | 175 | 238 | 165 | 16 | M10x25 | 69 | 1,53 |
| 95 x 135 | BK040095135 | 24 | 28 | 38 | 9326 | 196 | 254 | 179 | 18 | M10x25 | 69 | 1,62 |
| 100 x 145 | BK040100145 | 26 | 33 | 45 | 11362 | 227 | 258 | 178 | 14 | M12x30 | 123,3 | 2,01 |
| 110 x 155 | BK040110155 | 26 | 33 | 45 | 12498 | 227 | 234 | 166 | 14 | M12x30 | 123,3 | 2,15 |
| 120 x 165 | BK040120165 | 26 | 33 | 45 | 15578 | 260 | 245 | 178 | 16 | M12x30 | 123,3 | 2,35 |
| 130 x 180 | BK040130180 | 34 | 38 | 50 | 21095 | 325 | 217 | 156 | 20 | M12x35 | 123,3 | 3,51 |
| 140 x 190 | BK040140190 | 34 | 38 | 50 | 24993 | 357 | 221 | 163 | 22 | M12x35 | 123,3 | 3,85 |
| 150 x 200 | BK040150200 | 34 | 38 | 50 | 29217 | 390 | 225 | 169 | 24 | M12x35 | 123,3 | 4,07 |
| 160 x 210 | BK040160210 | 34 | 38 | 50 | 33756 | 422 | 229 | 174 | 26 | M12x35 | 123,3 | 4,30 |
| 170 x 225 | BK040170225 | 38 | 44 | 58 | 39483 | 465 | 212 | 160 | 22 | M14x40 | 187 | 5,80 |
| 180 x 235 | BK040180235 | 38 | 44 | 58 | 45606 | 507 | 218 | 167 | 24 | M14x40 | 187 | 6,00 |
| 190 x 250 | BK040190250 | 46 | 52 | 66 | 56163 | 591 | 199 | 152 | 28 | M14x45 | 187 | 8,50 |
| 200 x 260 | BK040200260 | 46 | 52 | 66 | 63342 | 633 | 203 | 156 | 30 | M14x45 | 187 | 8,60 |
| 220 x 285 | BK040220285 | 50 | 56 | 72 | 81960 | 745 | 200 | 154 | 26 | M16x50 | 290 | 11,00 |
| 240 x 305 | BK040240305 | 50 | 56 | 72 | 103162 | 860 | 211 | 166 | 30 | M16x50 | 290 | 12,00 |
| 260 x 325 | BK040260325 | 50 | 56 | 72 | 126669 | 974 | 221 | 177 | 34 | M16x50 | 290 | 13,00 |
| 280 x 355 | BK040280355 | 60 | 66 | 84 | 157339 | 1124 | 197 | 156 | 32 | M18x60 | 400 | 19,00 |
| 300 x 375 | BK040300375 | 60 | 66 | 84 | 189653 | 1264 | 207 | 166 | 36 | M18x60 | 400 | 20,00 |
| 320 x 405 | BK040320405 | 72 | 78 | 98 | 264108 | 1651 | 211 | 167 | 36 | M20x70 | 580 | 30,00 |