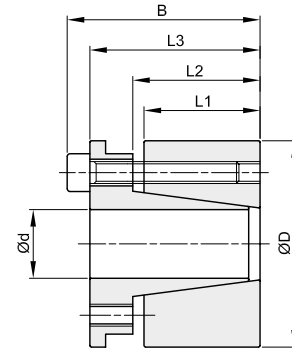
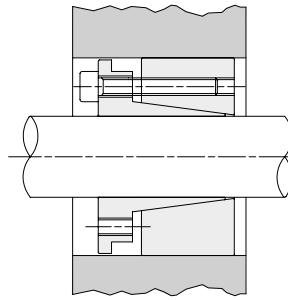


Selbstzentrierend

Für sehr hohe Drehmomente geeignet
 Toleranzen: Welle h8 – Nabe H8
 Oberflächenrauigkeit: R_a max 16 μ m
 Rundlauffehler: 0,02 mm \div 0,04 mm
 Kurze Einbauzeit

Geringfügige axiale Verschiebung bei der Montage möglich.



| d x D mm | Artikelnr. | L1 mm | L2 mm | L3 mm | B mm | Übertragbares | | Flächenpressung zw. Spannsatz und | | Spannschrauben | | | kg |
|-------------|-------------|----------|----------|----------|---------|------------------------|---------------------------|--------------------------------------|---------------------------------|------------------------|--------------------------|-----|------|
| | | | | | | Drehmoment Mt Nm | Axialkraft F ax. KN | Welle pw N/mm ² | Nabe pn N/mm ² | DIN 912 12,9 Nr. | Anzugsmoment Ms Nm | Typ | |
| 19 x 47 | BK070019047 | 26 | 31 | 39 | 45 | 307 | 32 | 193 | 78 | 4 | M6x25 | 17 | 0,39 |
| 20 x 47 | BK070020047 | 26 | 31 | 39 | 45 | 323 | 32 | 183 | 78 | 4 | M6x25 | 17 | 0,38 |
| 22 x 47 | BK070022047 | 26 | 31 | 39 | 45 | 355 | 32 | 166 | 78 | 4 | M6x25 | 17 | 0,37 |
| 24 x 50 | BK070024050 | 26 | 31 | 39 | 45 | 582 | 48 | 229 | 110 | 6 | M6x25 | 17 | 0,43 |
| 25 x 50 | BK070025050 | 26 | 31 | 39 | 45 | 606 | 48 | 220 | 110 | 6 | M6x25 | 17 | 0,42 |
| 28 x 55 | BK070028055 | 26 | 31 | 39 | 45 | 679 | 48 | 196 | 100 | 6 | M6x25 | 17 | 0,55 |
| 30 x 55 | BK070030055 | 26 | 31 | 39 | 45 | 727 | 48 | 183 | 100 | 6 | M6x25 | 17 | 0,56 |
| 32 x 60 | BK070032060 | 26 | 31 | 39 | 45 | 1033 | 65 | 229 | 122 | 8 | M6x25 | 17 | 0,60 |
| 35 x 60 | BK070035060 | 26 | 31 | 39 | 45 | 1130 | 65 | 209 | 122 | 8 | M6x25 | 17 | 0,50 |
| 38 x 65 | BK070038065 | 26 | 31 | 39 | 45 | 1227 | 65 | 193 | 113 | 8 | M6x25 | 17 | 0,60 |
| 40 x 65 | BK070040065 | 26 | 31 | 39 | 45 | 1292 | 65 | 183 | 113 | 8 | M6x25 | 17 | 0,60 |
| 42 x 75 | BK070042075 | 30 | 36 | 47 | 55 | 1835 | 87 | 204 | 115 | 6 | M8x30 | 41 | 1,00 |
| 45 x 75 | BK070045075 | 30 | 36 | 47 | 55 | 1966 | 87 | 191 | 115 | 6 | M8x30 | 41 | 1,00 |
| 48 x 80 | BK070048080 | 30 | 36 | 47 | 55 | 2097 | 87 | 179 | 107 | 6 | M8x30 | 41 | 1,10 |
| 50 x 80 | BK070050080 | 30 | 36 | 47 | 55 | 2184 | 87 | 172 | 107 | 6 | M8x30 | 41 | 1,00 |
| 55 x 85 | BK070055085 | 30 | 36 | 47 | 55 | 3202 | 116 | 208 | 135 | 8 | M8x30 | 41 | 1,10 |
| 60 x 90 | BK070060090 | 30 | 36 | 47 | 55 | 3493 | 116 | 191 | 127 | 8 | M8x30 | 41 | 1,20 |
| 65 x 95 | BK070065095 | 30 | 36 | 47 | 55 | 3784 | 116 | 176 | 120 | 8 | M8x30 | 41 | 1,30 |
| 70 x 110 | BK070070110 | 40 | 46 | 57 | 67 | 6607 | 189 | 199 | 127 | 8 | M10x35 | 83 | 2,20 |
| 75 x 115 | BK070075115 | 40 | 46 | 62 | 72 | 7079 | 189 | 186 | 121 | 8 | M10x35 | 83 | 2,50 |
| 80 x 120 | BK070080120 | 40 | 46 | 62 | 72 | 7551 | 189 | 174 | 116 | 8 | M10x35 | 83 | 2,60 |
| 85 x 125 | BK070085125 | 40 | 46 | 62 | 72 | 10029 | 236 | 205 | 139 | 10 | M10x35 | 83 | 2,80 |
| 90 x 130 | BK070090130 | 40 | 46 | 62 | 72 | 10619 | 236 | 193 | 134 | 10 | M10x35 | 83 | 2,70 |
| 95 x 135 | BK070095135 | 40 | 46 | 62 | 72 | 11209 | 236 | 183 | 129 | 10 | M10x35 | 83 | 2,90 |
| 100 x 145 | BK070100145 | 46 | 52 | 77 | 89 | 13738 | 275 | 176 | 121 | 8 | M12x45 | 145 | 3,90 |
| 110 x 155 | BK070110155 | 46 | 52 | 77 | 89 | 15111 | 275 | 160 | 114 | 8 | M12x45 | 145 | 4,20 |
| 120 x 165 | BK070120165 | 46 | 52 | 77 | 89 | 20606 | 343 | 183 | 133 | 10 | M12x45 | 145 | 4,80 |
| 130 x 180 | BK070130180 | 46 | 52 | 77 | 89 | 26788 | 412 | 203 | 147 | 12 | M12x45 | 145 | 5,00 |
| 140 x 190 | BK070140190 | 51 | 59 | 84 | 98 | 26142 | 373 | 154 | 114 | 8 | M14x45 | 230 | 6,50 |
| 150 x 200 | BK070150200 | 51 | 59 | 84 | 98 | 35016 | 467 | 180 | 135 | 10 | M14x45 | 230 | 7,00 |
| 160 x 210 | BK070160210 | 51 | 59 | 84 | 98 | 37351 | 467 | 169 | 129 | 10 | M14x45 | 230 | 7,00 |
| 170 x 225 | BK070170225 | 51 | 59 | 84 | 98 | 47617 | 560 | 191 | 144 | 12 | M14x45 | 230 | 8,77 |
| 180 x 235 | BK070180235 | 51 | 59 | 84 | 98 | 50418 | 560 | 180 | 138 | 12 | M14x45 | 230 | 9,00 |