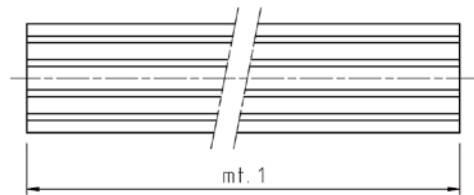
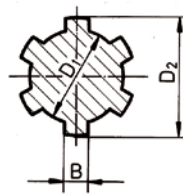


Eigenschaften

- ähnlich DIN ISO 14 kaltgezogen C45
- Toleranzen:
Geradheit 0,8 mm/m, Torsion max. 0,5 mm/m



Werkstoff Stahl C45

Artikelnr. 1 m	Artikelnr. 3 m	Profil mm	Anzahl Keile	Ø D ₁ 0 / -0,08 mm	Ø D ₂ -0,07 / -0,27 mm	B -0,03 / -0,08 mm	Gewicht kg/m
KW11x14x1000	KW11x14x3000	KW 11 x 14	6	11	14	3	0,949
KW13x16x1000	KW13x16x3000	KW 13 x 16	6	13	16	3,5	1,287
KW16x20x1000	KW16x20x3000	KW 16 x 20	6	16	20	4	1,911
KW18x22x1000	KW18x22x3000	KW 18 x 22	6	18	22	5	2,453
KW21x25x1000	KW21x25x3000	KW 21 x 25	6	21	25	5	3,139
KW23x28x1000	KW23x28x3000	KW 23 x 28	6	23	28	6	3,964
KW26x32x1000	KW26x32x3000	KW 26 x 32	6	26	32	6	5,008
KW32x38x1000	KW32x38x3000	KW 32 x 38	8	32	38	6	7,433
KW36x42x1000	KW36x42x3000	KW 36 x 42	8	36	42	7	9,302
KW42x48x1000	KW42x48x3000	KW 42 x 48	8	42	48	8	12,371
KW46x54x1000	KW46x54x3000	KW 46 x 54	8	46	54	9	15,300