

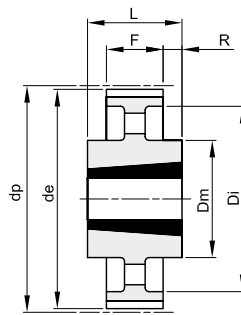


ZAHNRIEMENRÄDER „PCB“ SYNCHROCHAIN FÜR TAPERBUCHSEN

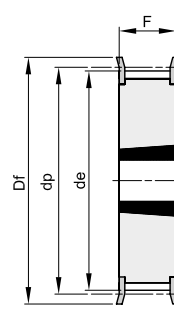
14M

Teilung 14 mm

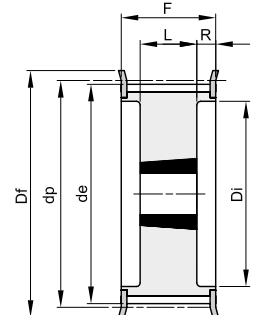
für Zahnriemenbreite 37 mm



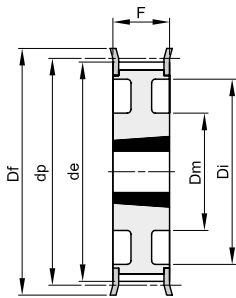
14



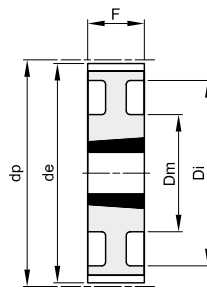
15F



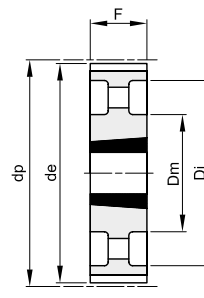
18F



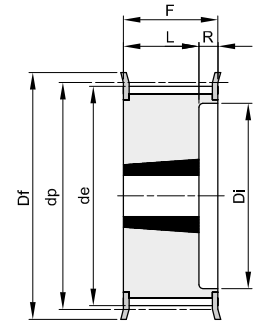
21F



21



22



23F

Werkstoff: Stahl

Werkstoff: Grauguss (GG)

Beschreibung	Artikelnr.	Typ	Werkstoff	Zähnezahl	Spanbuchsentyp	Bohrung max.	dp	de	Df	Dm	Di	F	L	R	d	Nr. Bordscheiben	kg
TL 14M 28S 37	PCB48037028	23F	St	28	2012	50	124,78	121,98	127	88	51	32	19		400	2,20	
TL 14M 30S 37	PCB48037030	18F	St	30	2517	65	133,69	130,89	138	98	51	45	3		401	2,50	
TL 14M 32S 37	PCB48037032	18F	St	32	2517	65	142,60	139,80	154	100	51	45	3		403	3,00	
TL 14M 34S 37	PCB48037034	18F	St	34	2517	65	151,52	148,72	160	109	51	45	3		404	3,80	
TL 14M 36S 37	PCB48037036	23F	St	36	2517	65	160,43	157,63	168	117	51	45	6		405	4,30	
TL 14M 38S 37	PCB48037038	23F	St	38	2517	65	169,34	166,54	183	126	51	45	6		406	5,10	
TL 14M 40S 37	PCB48037040	23F	St	40	2517	65	178,25	175,45	188	135	51	45	6		407	6,00	
TL 14M 44S 37	PCB48037044	15F	St	44	3020	75	196,08	193,28	211		51				411	7,00	
TL 14M 48S 37	PCB48037048	15F	St	48	3020	75	213,90	211,11	226		51				412	9,00	
TL 14M 50S 37	PCB48037050	15F	GG	50	3020	75	222,82	220,02	240		51				414	10,00	
TL 14M 56S 37	PCB48037056	21F	GG	56	3020	75	249,55	246,76	256	144	207	51			416	9,20	
TL 14M 60S 37	PCB48037060	21	GG	60	3020	75	267,38	264,58		159	224	51				10,20	
TL 14M 64S 37	PCB48037064	21	GG	64	3020	75	285,21	282,41		159	242	51				12,20	
TL 14M 72S 37	PCB48037072	21	GG	72	3020	75	320,86	318,06		159	278	51				13,40	
TL 14M 80S 37	PCB48037080	21	GG	80	3020	75	356,51	353,71		159	314	51				16,10	
TL 14M 90S 37	PCB48037090	22	GG	90	3020	75	401,07	398,27		159	360	51				17,20	
TL 14M 112S 37	PCB48037112	22	GG	112	3020	75	499,11	496,31		159	456	51				23,00	
TL 14M 140S 37	PCB48037140	14	GG	140	3525	90	623,89	621,09		206	581	51	65	7		41,00	
TL 14M 168S 37	PCB48037168	14	GG	168	3525	90	748,66	745,87		206	706	51	65	7		51,50	
TL 14M 192S 37	PCB48037192	14	GG	192	4030	90	855,61	852,82		215	812	51	76	12,5		60,00	