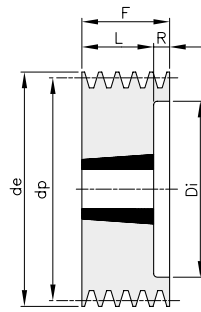
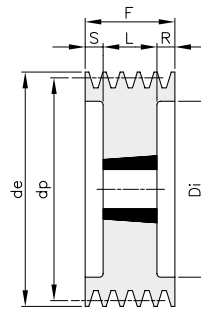


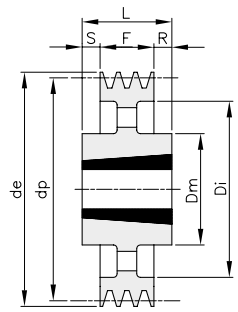
## SPZ – 3



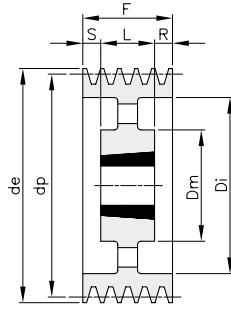
2



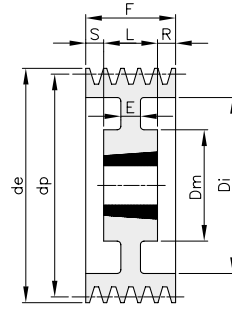
3



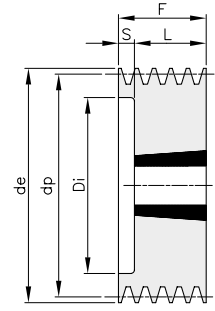
4



5



6



8

Werkstoff: Grauguss EN-GJL-200

| Beschreibung | Artikelnr. | Rille | dp  | de  | Typ | Spann-<br>buchsen | Bohrung<br>max. | Dm  | Di  | E  | F  | L    | R    | S     | kg   |
|--------------|------------|-------|-----|-----|-----|-------------------|-----------------|-----|-----|----|----|------|------|-------|------|
| SPZ 63 03    | TZ030063   | 3     | 63  | 67  | 8   | 1108              | 28              | 40  | 40  | 22 | 18 | 0,50 |      |       |      |
| SPZ 67 03    | TZ030067   | 3     | 67  | 71  | 8   | 1108              | 28              | 42  | 40  | 22 | 18 | 0,70 |      |       |      |
| SPZ 71 03    | TZ030071   | 3     | 71  | 75  | 8   | 1108              | 28              | 42  | 40  | 22 | 18 | 0,70 |      |       |      |
| SPZ 75 03    | TZ030075   | 3     | 75  | 79  | 8   | 1210              | 32              | 51  | 40  | 25 | 15 | 0,80 |      |       |      |
| SPZ 80 03    | TZ030080   | 3     | 80  | 84  | 8   | 1210              | 32              | 51  | 40  | 25 | 15 | 0,80 |      |       |      |
| SPZ 85 03    | TZ030085   | 3     | 85  | 89  | 8   | 1610              | 42              | 60  | 40  | 25 | 15 | 0,80 |      |       |      |
| SPZ 90 03    | TZ030090   | 3     | 90  | 94  | 8   | 1610              | 42              | 61  | 40  | 25 | 15 | 0,90 |      |       |      |
| SPZ 95 03    | TZ030095   | 3     | 95  | 99  | 8   | 1610              | 42              | 66  | 40  | 25 | 15 | 1,10 |      |       |      |
| SPZ 100 03   | TZ030100   | 3     | 100 | 104 | 8   | 1610              | 42              | 71  | 40  | 25 | 15 | 1,20 |      |       |      |
| SPZ 106 03   | TZ030106   | 3     | 106 | 110 | 8   | 1610              | 42              | 76  | 40  | 25 | 15 | 1,40 |      |       |      |
| SPZ 112 03   | TZ030112   | 3     | 112 | 116 | 8   | 2012              | 50              | 83  | 40  | 32 | 8  | 1,50 |      |       |      |
| SPZ 118 03   | TZ030118   | 3     | 118 | 122 | 8   | 2012              | 50              | 90  | 40  | 32 | 8  | 1,60 |      |       |      |
| SPZ 125 03   | TZ030125   | 3     | 125 | 129 | 2   | 2012              | 50              | 96  | 40  | 32 | 8  | 2,00 |      |       |      |
| SPZ 132 03   | TZ030132   | 3     | 132 | 136 | 2   | 2012              | 50              | 103 | 40  | 32 | 8  | 2,40 |      |       |      |
| SPZ 140 03   | TZ030140   | 3     | 140 | 144 | 2   | 2010              | 50              | 111 | 40  | 32 | 8  | 2,80 |      |       |      |
| SPZ 150 03   | TZ030150   | 3     | 150 | 154 | 2   | 2012              | 50              | 121 | 40  | 32 | 8  | 3,40 |      |       |      |
| SPZ 160 03   | TZ030160   | 3     | 160 | 164 | 2   | 2012              | 50              | 131 | 40  | 32 | 8  | 3,60 |      |       |      |
| SPZ 170 03   | TZ030170   | 3     | 170 | 174 | 3   | 2012              | 50              | 141 | 40  | 32 | 4  | 4    | 3,70 |       |      |
| SPZ 180 03   | TZ030180   | 3     | 180 | 184 | 6   | 2012              | 50              | 106 | 151 | 7  | 40 | 32   | 8    | 3,70  |      |
| SPZ 190 03   | TZ030190   | 3     | 190 | 194 | 6   | 2012              | 50              | 112 | 161 | 10 | 40 | 32   | 4    | 4     | 4,00 |
| SPZ 200 03   | TZ030200   | 3     | 200 | 204 | 5   | 2012              | 50              | 112 | 171 | 40 | 32 | 4    | 4    | 4,30  |      |
| SPZ 224 03   | TZ030224   | 3     | 224 | 228 | 5   | 2012              | 50              | 112 | 195 | 40 | 32 | 4    | 4    | 4,70  |      |
| SPZ 250 03   | TZ030250   | 3     | 250 | 254 | 5   | 2012              | 50              | 112 | 221 | 40 | 32 | 4    | 4    | 5,40  |      |
| SPZ 280 03   | TZ030280   | 3     | 280 | 284 | 4   | 2517              | 65              | 124 | 251 | 40 | 45 | 2,5  | 2,5  | 6,50  |      |
| SPZ 315 03   | TZ030315   | 3     | 315 | 319 | 4   | 2517              | 65              | 124 | 286 | 40 | 45 | 2,5  | 2,5  | 7,80  |      |
| SPZ 355 03   | TZ030355   | 3     | 355 | 359 | 4   | 2517              | 65              | 124 | 326 | 40 | 45 | 2,5  | 2,5  | 8,90  |      |
| SPZ 400 03   | TZ030400   | 3     | 400 | 404 | 4   | 2517              | 65              | 124 | 371 | 40 | 45 | 2,5  | 2,5  | 9,10  |      |
| SPZ 450 03   | TZ030450   | 3     | 450 | 454 | 4   | 2517              | 65              | 124 | 421 | 40 | 45 | 2,5  | 2,5  | 9,70  |      |
| SPZ 500 03   | TZ030500   | 3     | 500 | 504 | 4   | 2517              | 65              | 124 | 471 | 40 | 45 | 2,5  | 2,5  | 13,50 |      |
| SPZ 630 03   | TZ030630   | 3     | 630 | 634 | 4   | 3020              | 75              | 150 | 601 | 40 | 51 | 5,5  | 5,5  | 19,30 |      |
| SPZ 800 03   | TZ030800   | 3     | 800 | 804 | 4   | 3020              | 75              | 150 | 771 | 40 | 51 | 5,5  | 5,5  | 30,00 |      |